

Project: Sakala apartment house, renovation of protected monumental building
Tallinn, Estonia

renovation of historical significant building. Kernal was completely removed and replaced by new concrete structure made of Steel fiber reinforced concrete.



jobsite with very limited space capacity. Limited need of traditional reinforcement mandatory. „Reinforcement“ was delivered in the concrete mixer from the concrete plant in shape of fiber

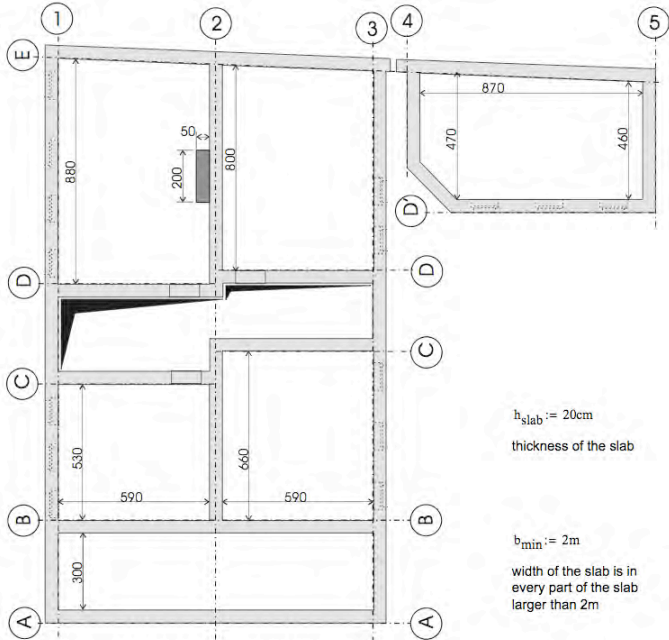


- elevated slabs made of steel fiber reinforced concrete and Anti-Progressive-collapse-reinforcement
- d=200mm
- concrete: adapted C30/37 XC1
- fiber content: 100kg/m3 of an undulated fiber 1,3/50

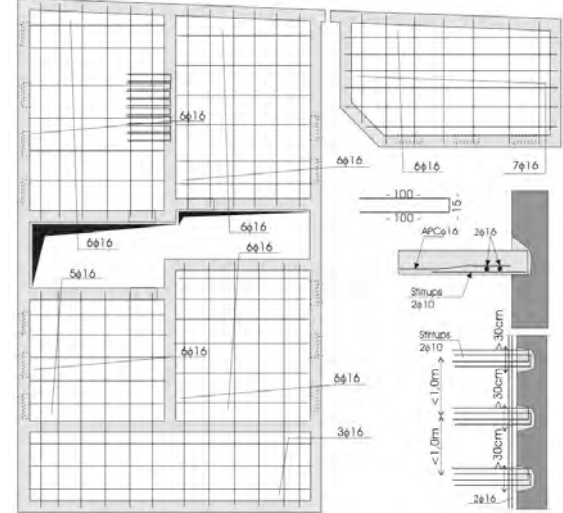
supports of the new floors with „pockets in the existing lime- and brick-stone walls APC-reinforcement



Project: Sakala apartment house, renovation of protected monumental building
Tallinn, Estonia



6. reinforcement in bottom layer



drawing for traditional reinforcement

design service by Jurgen Mandi / Severstal-metiz
Design done according to DIN-standards on steel fiber reinforced concrete with regard to theory of plasticity.

